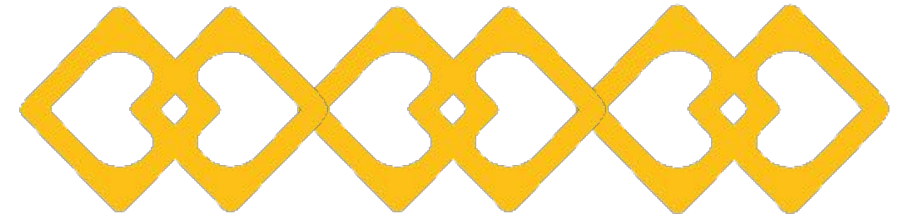




Deki

2022 ANNUAL REPORT

Deki now has 2 Schools!

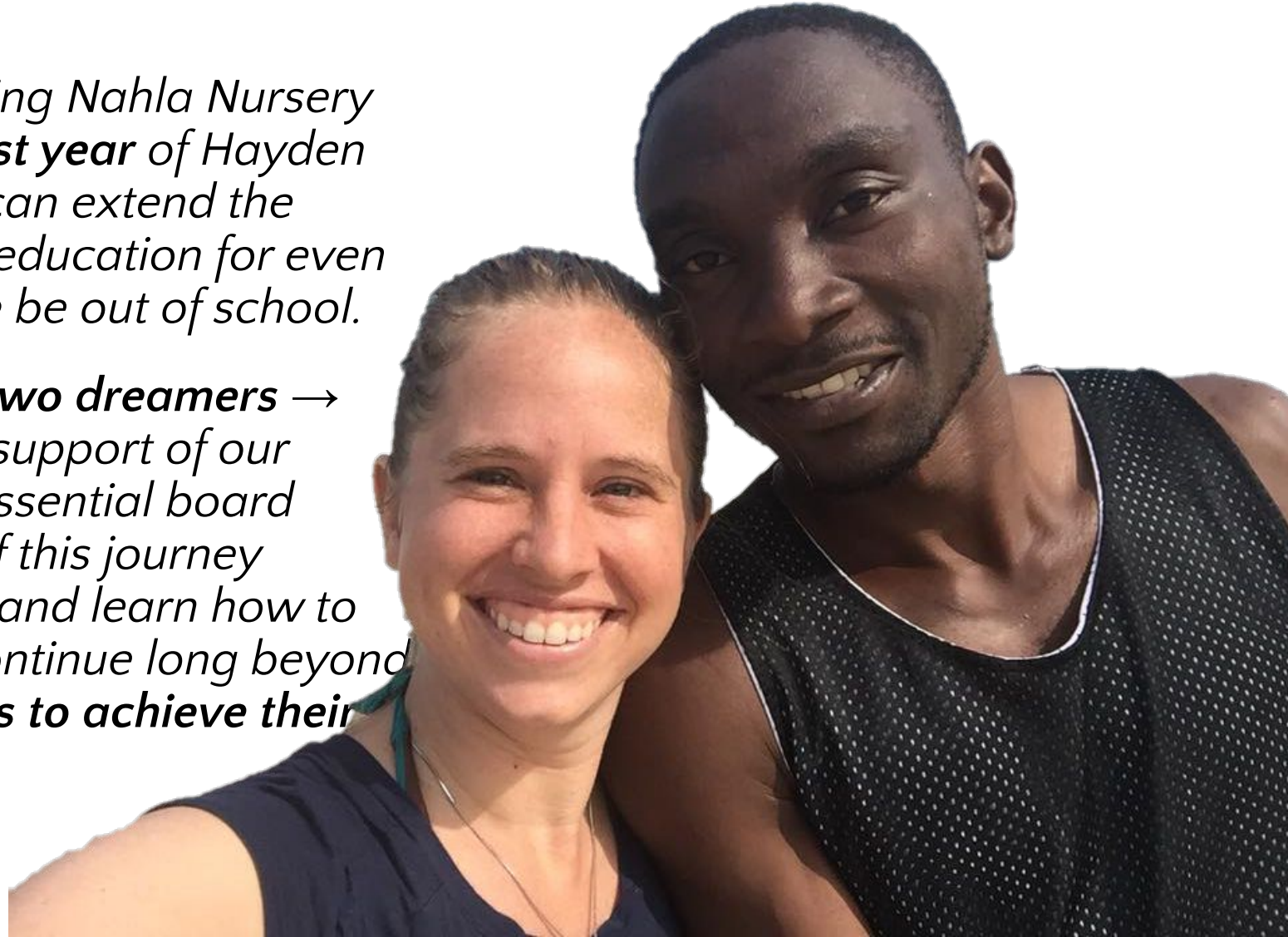


Dear Friends,

*2022 was Deki's **fifth year** of operating Nahla Nursery and Primary School and our **very first year** of Hayden Nursery School!! We're so glad we can extend the success of Nahla to provide quality education for even more students that would otherwise be out of school.*

*We're continually amazed at what **two dreamers** → have been able to achieve with the support of our family, friends, volunteers and our essential board members. Thanks for being a part of this journey with us! We are continuing to grow and learn how to build sustainable impact that will continue long beyond our own efforts and **empower others to achieve their dreams.***

- Shauna & Fred





OUR VISION:

is to TRANSFORM
Northern Uganda

through access to
sustainable quality
education

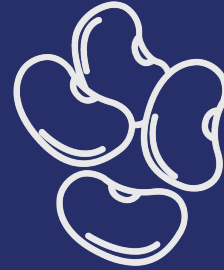


Deki Students' Journey to Success

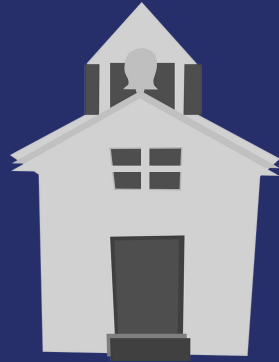


Students bring new skills to their communities and advance development

Parents contribute food and children eat healthy meals at school



Children attend a school that's close to home



Due to their high exam scores our students transition to high quality secondary schools



Qualified teachers teach small class sizes and receive ongoing training to improve their teaching





Hayden Nursery School

ADMISSION

OPEN

In 2022 we launched the nursery (preschool) at our second school for the very first time with 70 children enrolled in 3 levels of nursery school for the first year of operations!! We hired 3 teachers to provide education to these students. Our pre-school is helping prepare rural children with the basic knowledge and socialization to be ready to succeed in primary school.

Nahla Nursery and Primary School



The Nahla school was finally able to open for a normal school year for the first time since Covid! We were grateful that our children came back and we provided quality education to **218 students** with **16 teachers**. Due to the challenges brought by the pandemic our enrollment numbers weren't as high as they've been in previous years but we expect them to increase through our community engagement activities. The Nahla School continues to maintain its reputation in the community for high performing students!

We're proud of the contribution our teachers made this past year to ensure our students get quality education. This year we had several passionate teachers that moved to live right next to the school. They say they enjoy being able to see students arrive in the morning and leave in the evening.



Dedicated Teachers are Essential to our Students' Success



Parents Want to Contribute to Education

Parents are very excited about how their children have been transformed through education and they want to be a part of that change.

We've had parents offer to sell their crops to purchase school supplies and contribute towards teacher salaries. They want to be a part of the change that is taking place in their children and the community.



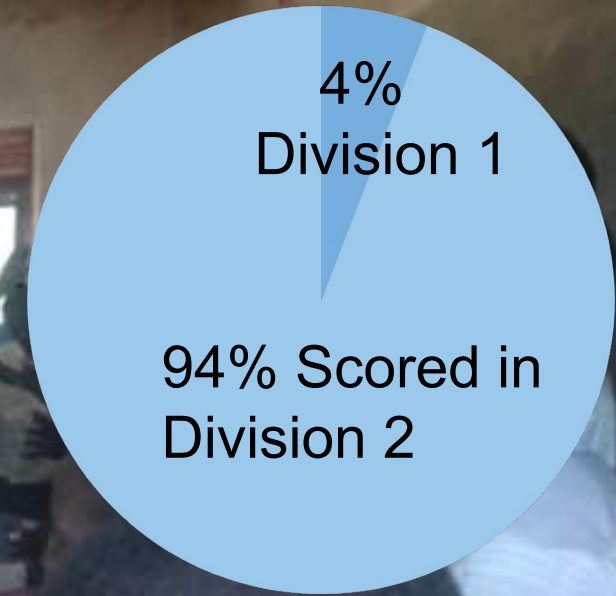
It was our first year with two graduating preschool classes!!

Preschool students from Nahla and Hayden Schools celebrated their graduation with their parents and community members.

For our first graduation at Hayden, the local government leader was the Master of Ceremonies!

Nahla and Hayden Preschool Students Graduate!

Our Students Performed Well on Exams



17 students took Primary 7 exams

Parents got together at Nahla to pray for their Primary 7 children's performance on the graduating exams.

All our students performed very well with 100% scoring in the top two divisions.



Schools Closed Early for Ebola

School was disrupted again this year when Ebola became a concern in Western Uganda. The Ugandan government decided that all schools across the country would close early to protect children from the spread of the deadly disease. Luckily no cases of Ebola were found in our area.



SUSTAINABILITY PROGRESS:

We received a grant to purchase a Grain Mill! Now, instead of traveling long distances to the trading center to pay for someone else to grind our grain, we are able to grind the crops that the parents contribute on site at our school to make flour to feed our students.

We also gave the community access to the Grain Mill so we can use it as a way of generating income to run the school.



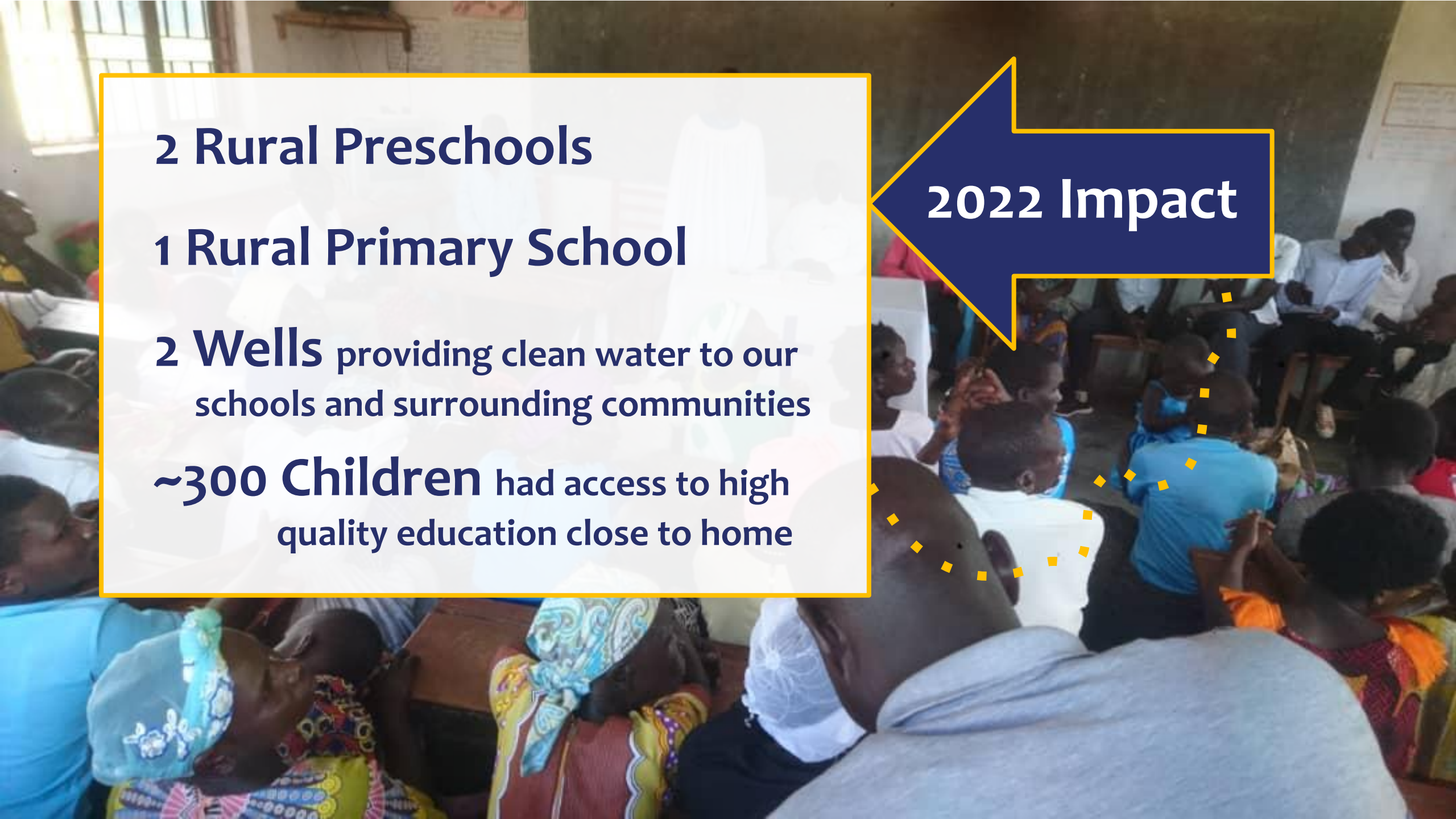
2 Rural Preschools

1 Rural Primary School

2 Wells providing clean water to our schools and surrounding communities

~300 Children had access to high quality education close to home

2022 Impact





“Let us make our future now, and let us make our dreams tomorrow’s reality.”

– Malala Yousafzai

Together we can make our students dreams come true and empower them to build a new future for themselves.